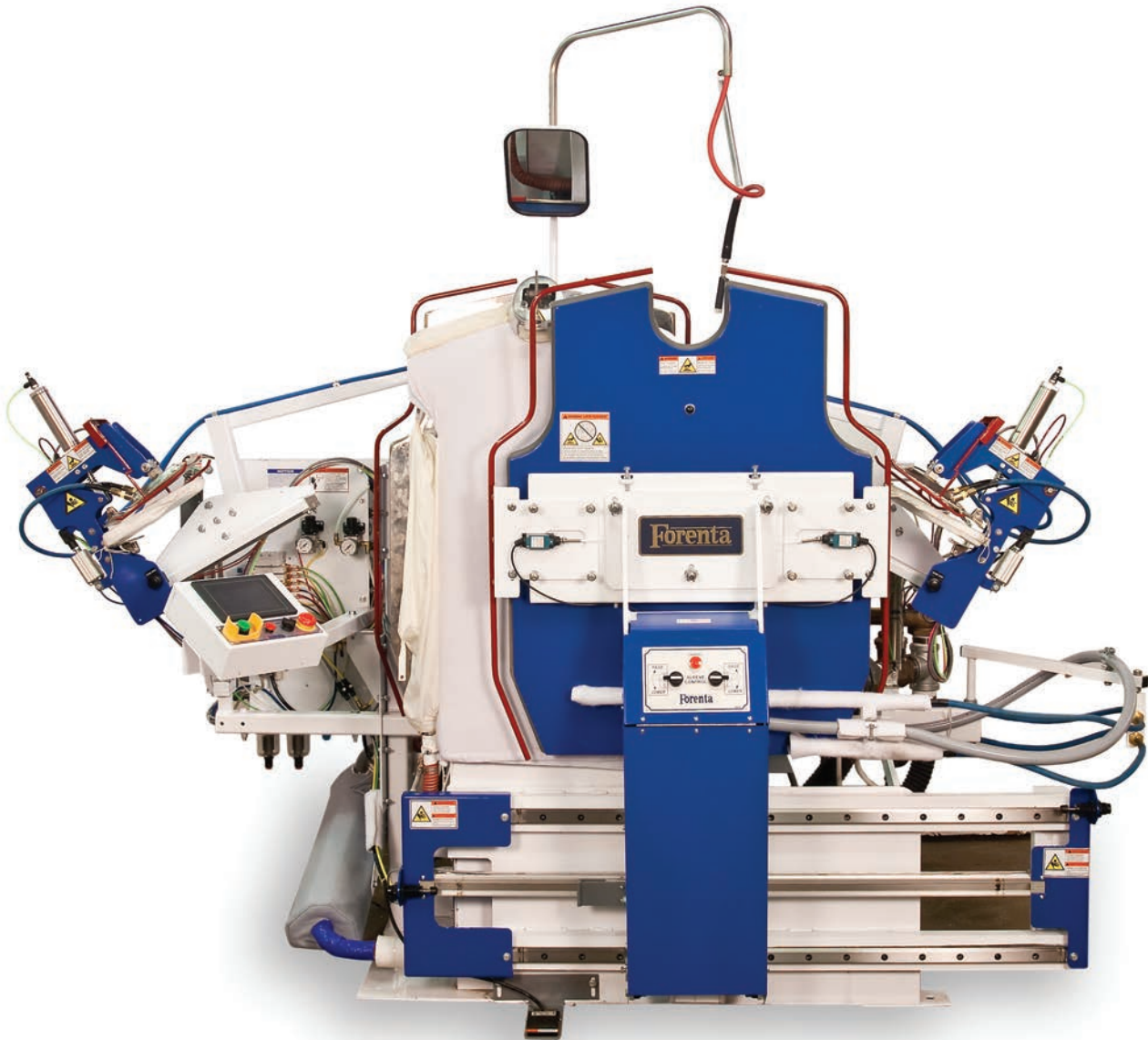


# Forenta

Morristown, TN U.S.A.

## MAGNA MODEL 822SBSP Combination Body-Sleeve Press with Pleat Finishers



- Designed to finish wide range of sizes and styles
- Flat heads for better finish
- Stationary buck--shirt is completely dressed from one position
- Blowers automatically turn off when not in use for quieter operation
- Sleeve pleaters turn on or off with touch of screen
- Sleeves adjust easily up and down for better sleeve finish
- Color touch screen control panel
- Self-diagnostics from touch screen

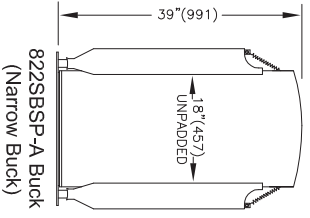
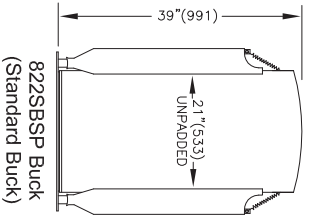
*Water spray and mirror standard*

# Specifications

## Model 822SBSP

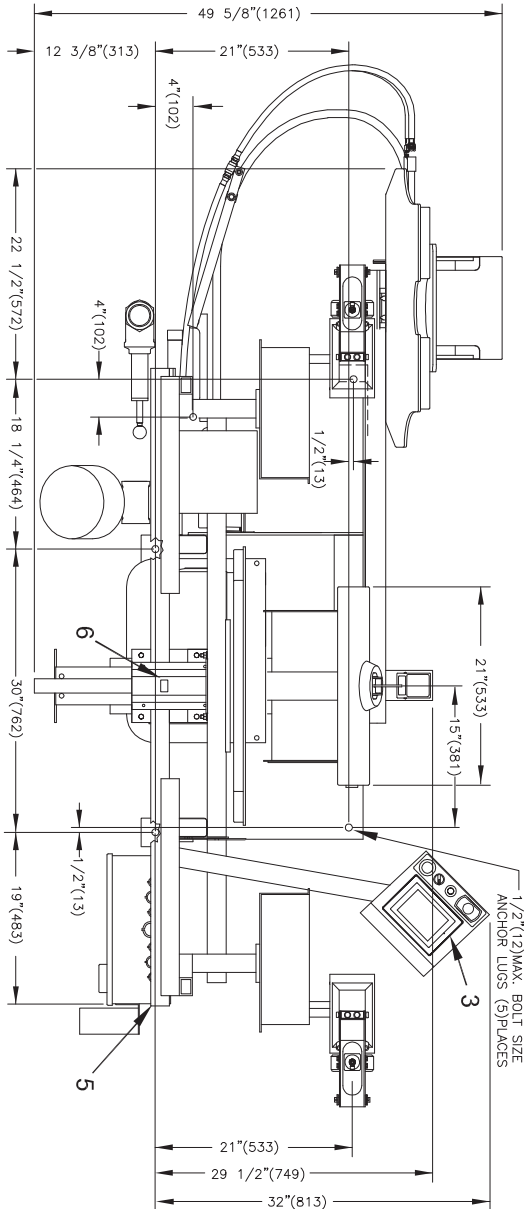
<b>Electrical connections</b>	822SBSP
208-240V 3PH 50/60Hz 30.8-29.8 Amps 5.5kW	standard
380-415 / 460V 3PH 50/60Hz 18.5-18.1 / 17.7 Amps 5.5 kW	optional
380-415 / 460V 3PH 50/60Hz 20.7 Amps 5.5 kW, with 240V Neutral wire	optional
<b>Steam and air connections</b>	
Steam inlet	NPT 1/2"
Steam outlet (total of 4 outlets)	NPT 1/2"
Recommended steam pressure	PSIG 115-125 kPa 793-862
Steam consumption @ 125 psig (862 kPa)	lb/hr 86 kg/hr 39 BHP 2.5
Compressed air	NPT 3/8"
Air consumption/shirt	free air/cycle @ 85 psig free air/cycle @ 586 kPa
Recommended air pressure	PSIG 85 kPa 586
Water connection (for water spray)	NPT 1/4"
<b>Weight (crated)</b>	lbs 1690 kg 767
<b>Shipping</b>	

- 1 Steam connection
- 2 Steam outlets
- 3 Control panel
- 4 Air connection
- 5 Electrical connection
- 6 Water connection (For water spray)



### BODY BUCK DIMENSIONS

TOP VIEW



Detail Line Drawing  
(millimeters shown in parentheses)

REAR VIEW

