

Forenta

Morristown, TN U.S.A.

Draperies and Flatwork Presses

Model A54VLDP

Model A6024VLFV, Model A6024VLFP

- Designed for Flatwork and Drapery Finishing
- Two Buck Steam Valves
- Two Vacuum Valves on VLFV
- Hot Head with Bar Control



A6024VLFV

A6024VLFP



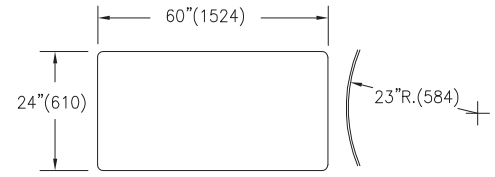
A54VLDP

- Designed for Finishing Drapes
- Two Buck Valves for Instant Steam Conditioning
- Two Vacuum Valves for Quicker, Efficient Drying
- Steam-Electric Iron Attachment and Water Spray Included

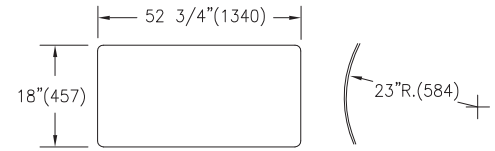
Specifications

Models A54VLDP, A6024VLFP/VLFV

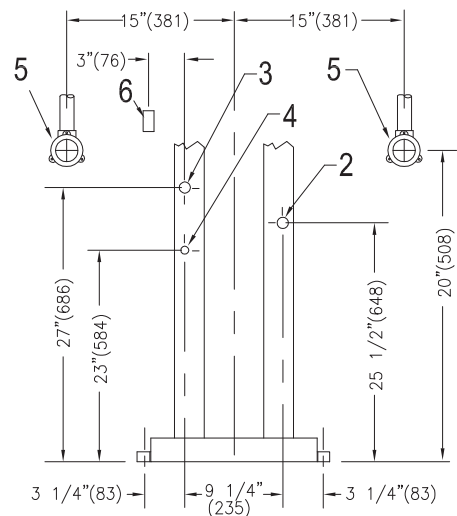
Steam and Air connection		A54VLDP	A6024VLFV	A6024VLFP
Steam Inlet	NPT	1/2"	1/2"	1/2"
Steam Outlet	NPT	1/2"	1/2"	1/2"
Rec. steam pressure	PSIG kPa	100-125 621-861	100-125 621-861	100-125 621-861
Steam consumption	BHP kg/hr	1 15.6	1.5 23.4	1.5 23.4
Compressed air	NPT	3/8"	3/8"	3/8"
Air consumption	free air/cycle at 68psig free air/cycle at 470kPa	0.31 CU.FT. 8.8 liters	0.31 CU.FT. 8.8 liters	0.31 CU.FT. 8.8 liters
Rec. air pressure	PSIG kPa	68 470	68 470	68 470
Vacuum connection	NPT	1 1/4"	1 1/4"	-
Weight (crated)				
Shipping	lbs kg	1070 485	1090 494	1090 494
Dimensions				
A		30 1/2"(775)	34"(864)	34"(864)
B		60"(1524)	68"(1727)	68"(1727)
C		60"(1524)	64"(1626)	64"(1626)
1	Control bar	4	Air connection	
2	Steam Outlet connection	5	Vacuum connection	
3	Steam connection	6	Water connection (for optional water spray)	



A6024VLFP/VLFV Buck Dimensions



A54VLDP Buck Dimensions



REAR VIEW

Detail Line Drawing

(millimeters shown in parentheses)

