

Forenta

Morristown, TN U.S.A.

SELF-CONTAINED UTILITY PRESS

Model 461SURMC-BV



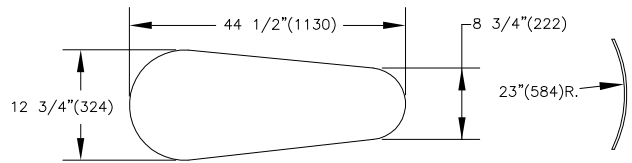
- All the features and quality of a conventional press with built-in steam and vacuum
- External compressed air required
- 12 KW boiler provides plenty of dry steam
- Available with options: Iron Attachment, Hand Iron, Sleeve Board, Water Spray

Options: Iron attachment, hand iron, sleeve board, water spray

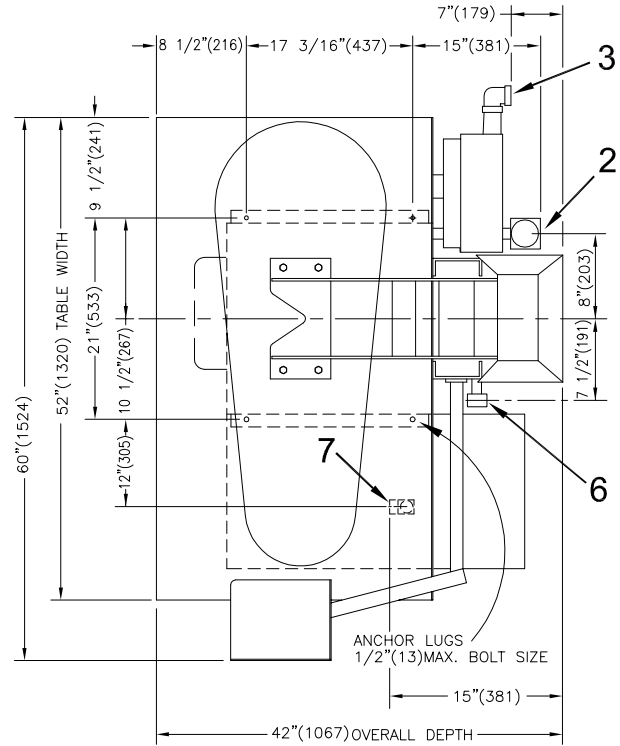
Specifications

Model 461SURMC-BV

Electrical connections		421SURMC-BV
Voltage	208-230V 3PH 50Hz 38amps 12.87KW	Standard
Voltage	208-230V 3PH 60Hz 38amps 12.87KW	optional
Voltage	400V 3PH 60Hz 23amps 12.87KW	optional
Voltage	400V 3PH 50Hz 23amps 12.87KW	optional
Optional Iron Attachment: Voltage 208-230V 1PH 50/60Hz 1000watts 4.8amps		
Air / Water / Vacuum / Drain connections		
Compressed Air Connection	NPT	3/8"
Air consumption	free air/cycle at 80psig	0.30 FT ³
	free air/cycle at 552kPa	.008m ³
Rec. air pressure	PSIG	80
	kPa	552
Vacuum Exhaust Connection		2" PVC
Water Connection	NPT	1/2"
Boiler Drain Connection	NPT	1/2"
Pressure Relief Valve Connection	Hose	9/16" I.D.
Weight (crated)		
Shipping	lbs	782
	kg	355
1 Control Push Buttons	5 Boiler Drain Connection	
2 Air Connection	6 Water Connection	
3 Vacuum Exhaust Connection	7 Pressure Relief Valve	
4 Electrical Connection		

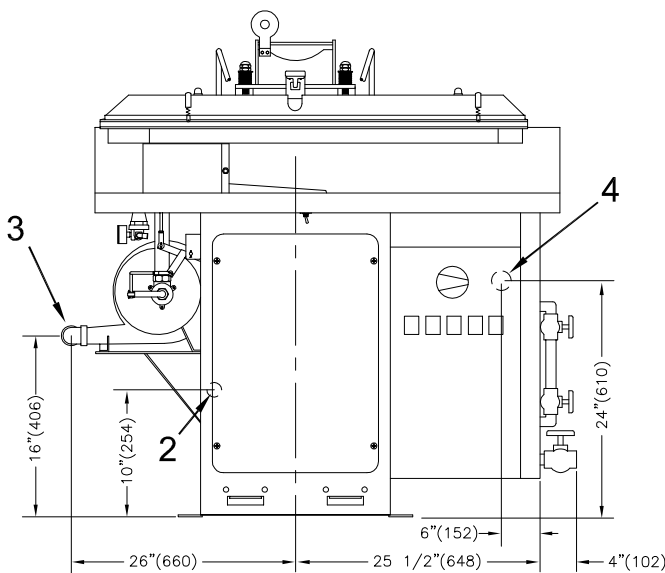


Buck Dimensions

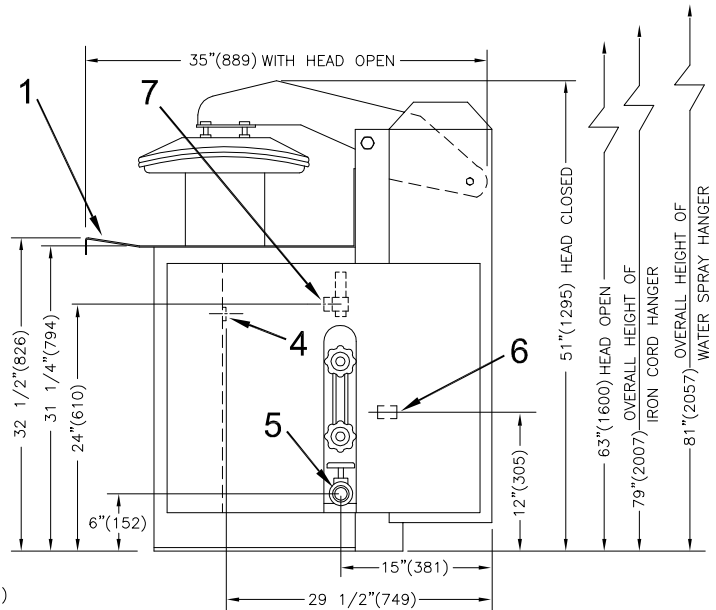


Top View

Detail Line Drawing (millimeters shown in parentheses)



Front view



Right Side View