

# Forenta

## WATER CHILLER



Available in 5, 7.5 and 10-ton Self-Contained Package Units  
And 5, 7.5, 10, 15 and 20-ton Modular Systems

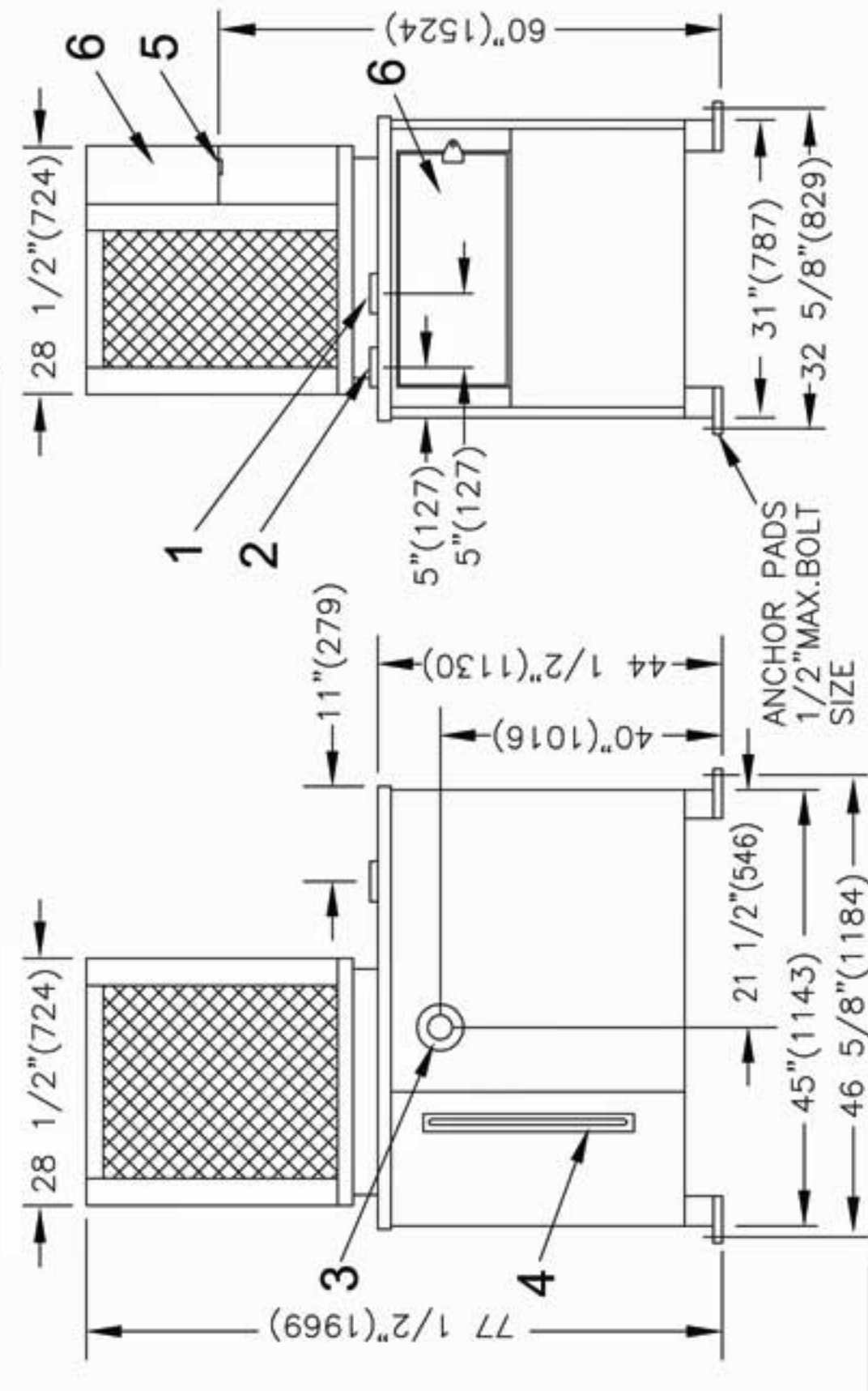
# PACKAGE CHILLER

## Specifications

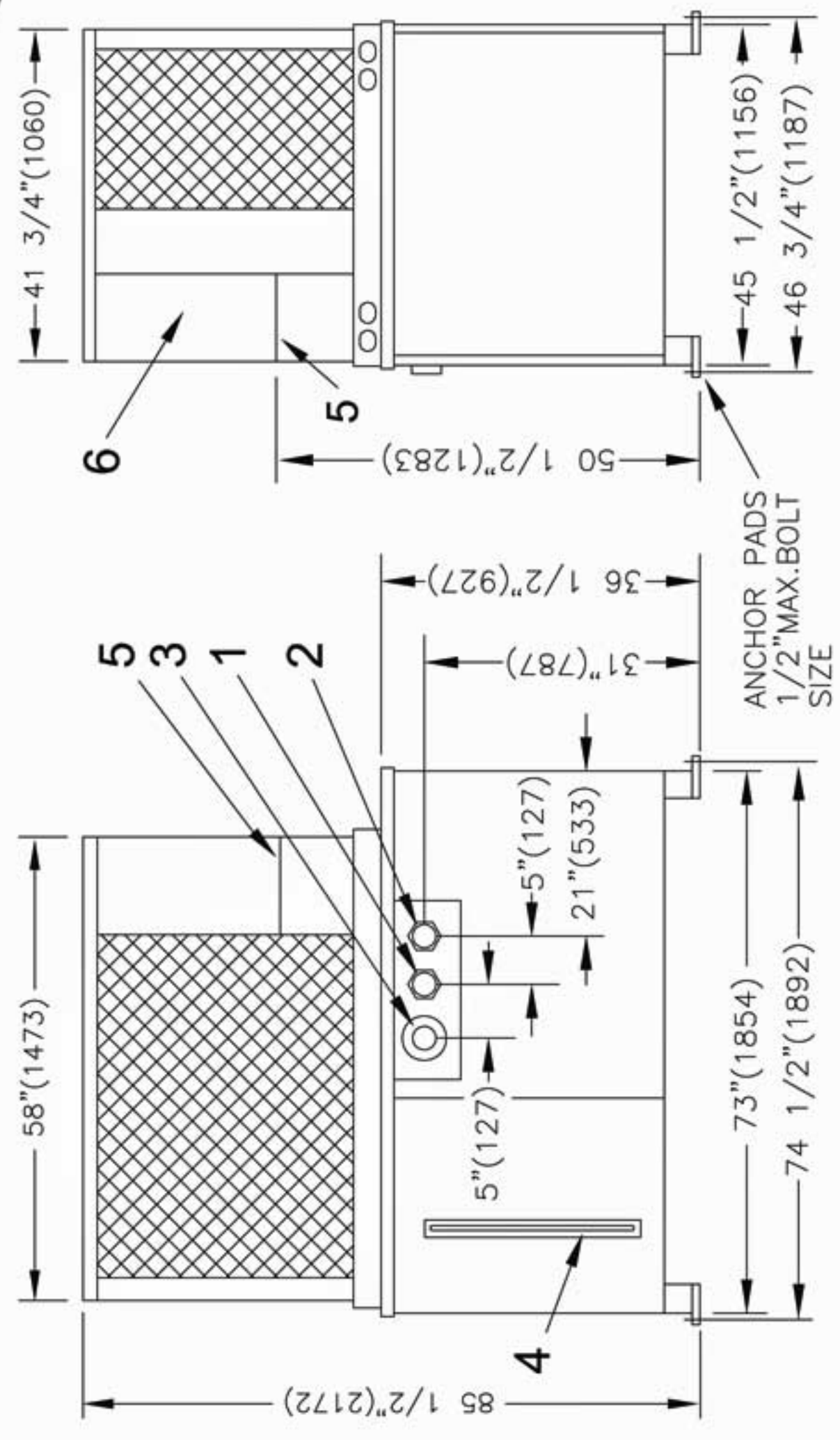
Model 5CPB, 75CPB, 10CPB

Electrical Connections	5CPB	75CPB	10CPB
208/230V 60Hz. 3Ph. Amps	X 26.5	X 37.2	X 40.9
Minimum Circuit Amps	30.4	43.5	48.4
Maximum Fuse Amps	50	70	70
Water Connections			
Water In	1"	1 1/4"	1 1/2"
Water Out	1"	1 1/4"	1 1/2"
Refrigerant	R410A	R410A	R410A
Weight			
Chiller Unit (less water)	595 lbs	995 lbs	1105 lbs
	270 kg	451 kg	501 kg
Shipping (crated)	705 lbs	1105 lbs	1225 lbs
	320 kg	501 kg	556 kg
1 Water Out	4	Water Level Indicator	
2 Water In	5	Electrical Connection	
3 Tank Fill	6	Electrical Panel	

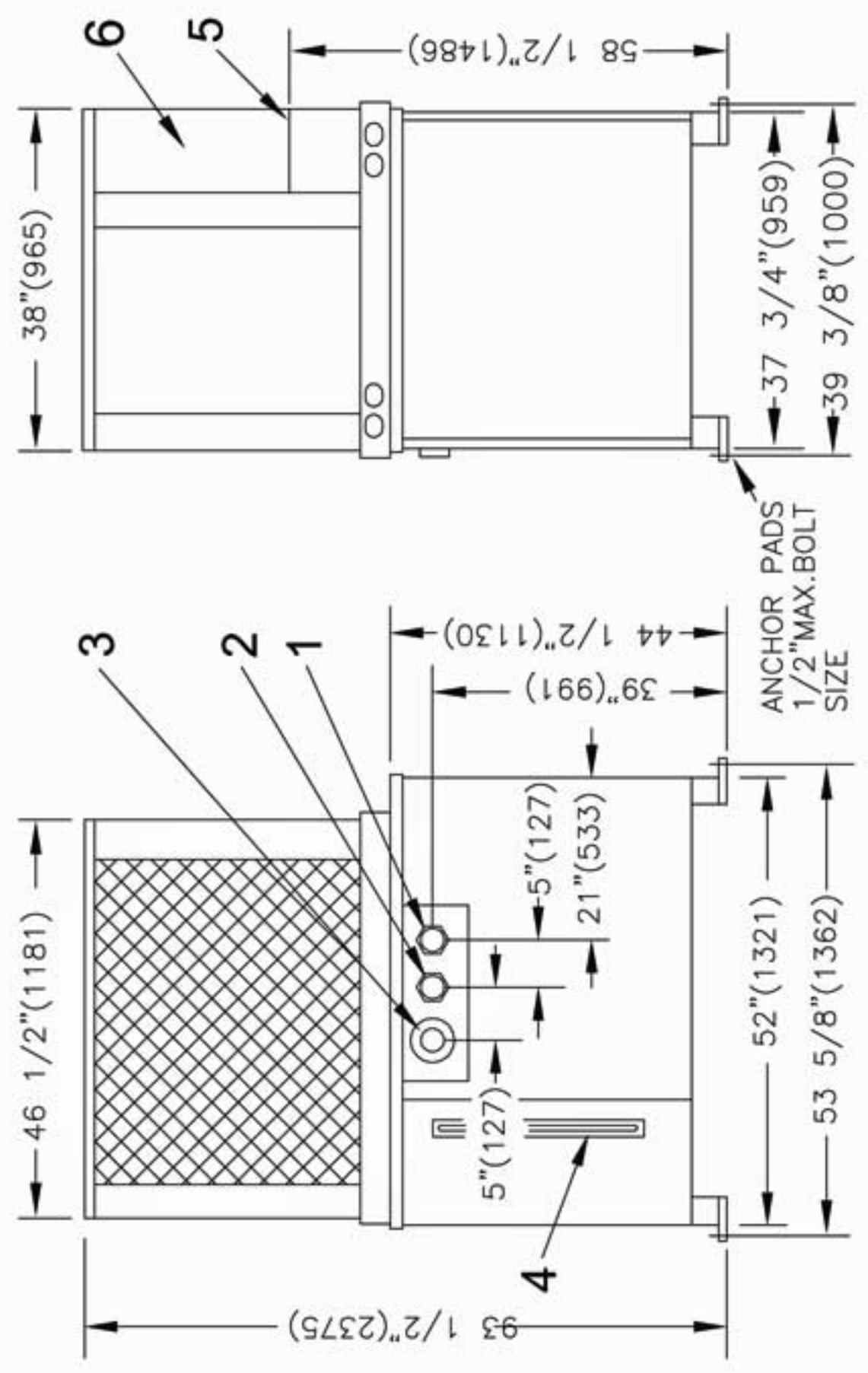
## Detail Line Drawing (millimeters shown in parentheses)



5CPB



10CPB



75CPB

# Specifications

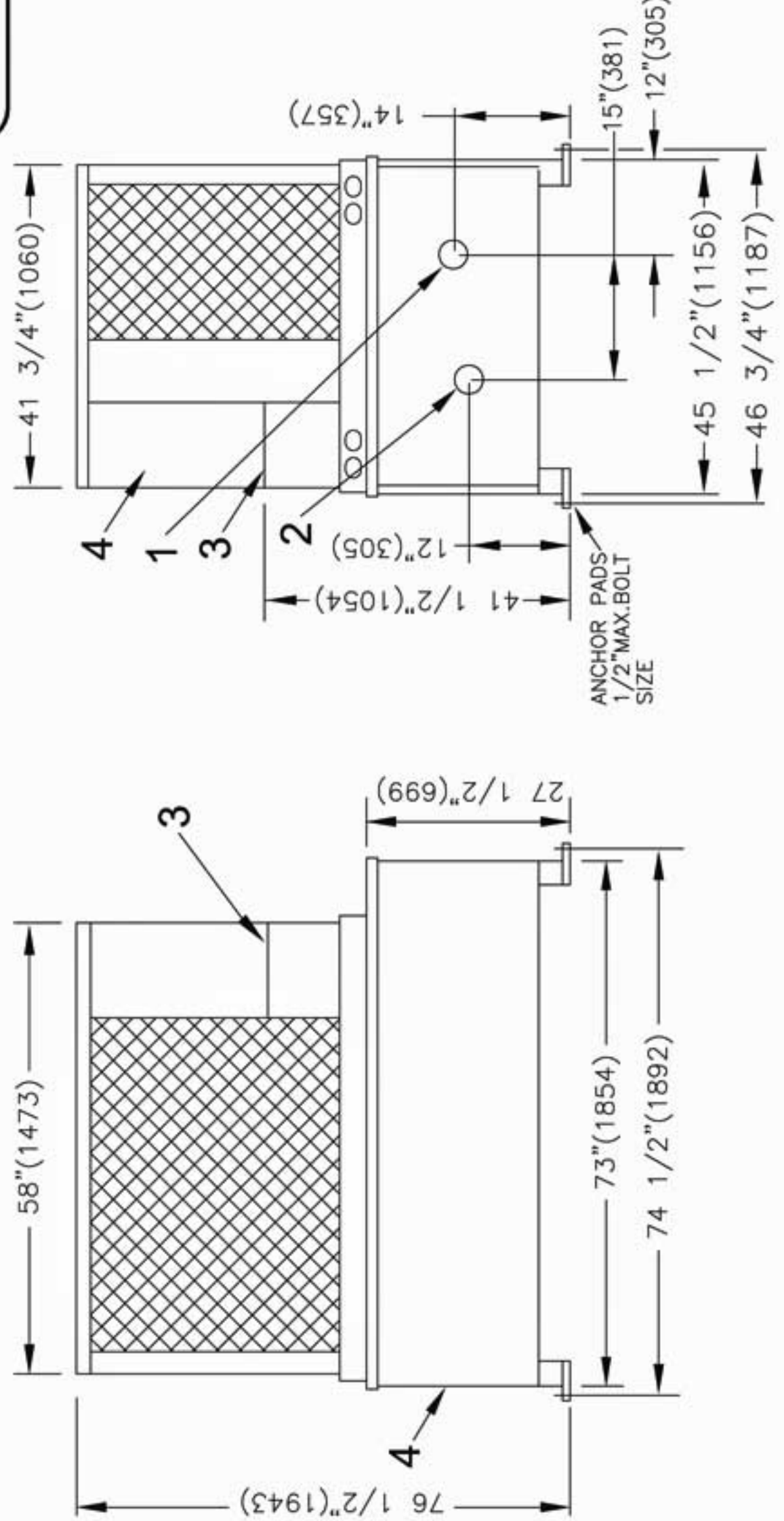
## Model 5CSB, 75CSB, 10CSB

Electrical Connections	5CSB	75CSB	10CSB
208/230V 60Hz. 3Ph.	X	X	X
Minimum Circuit Amps	17.3	28	34.9
Maximum Fuse Amps	21.2	34.3	42.4
	35	50	70
Water Connections			
Water In	1"	1 1/4"	1 1/2"
Water Out	1"	1 1/4"	1 1/2"
Refrigerant	R410A	R410A	R410A
Weight (crated)			
Chiller Unit (less water)	435 lbs	815 lbs	920 lbs
	197 kg	370 kg	417 kg
Shipping	545 lbs	925 lbs	1040 lbs
	247 kg	420 kg	472 kg
1 Water Out	3 Electrical Connection		
2 Water In	4 Electrical Panel		

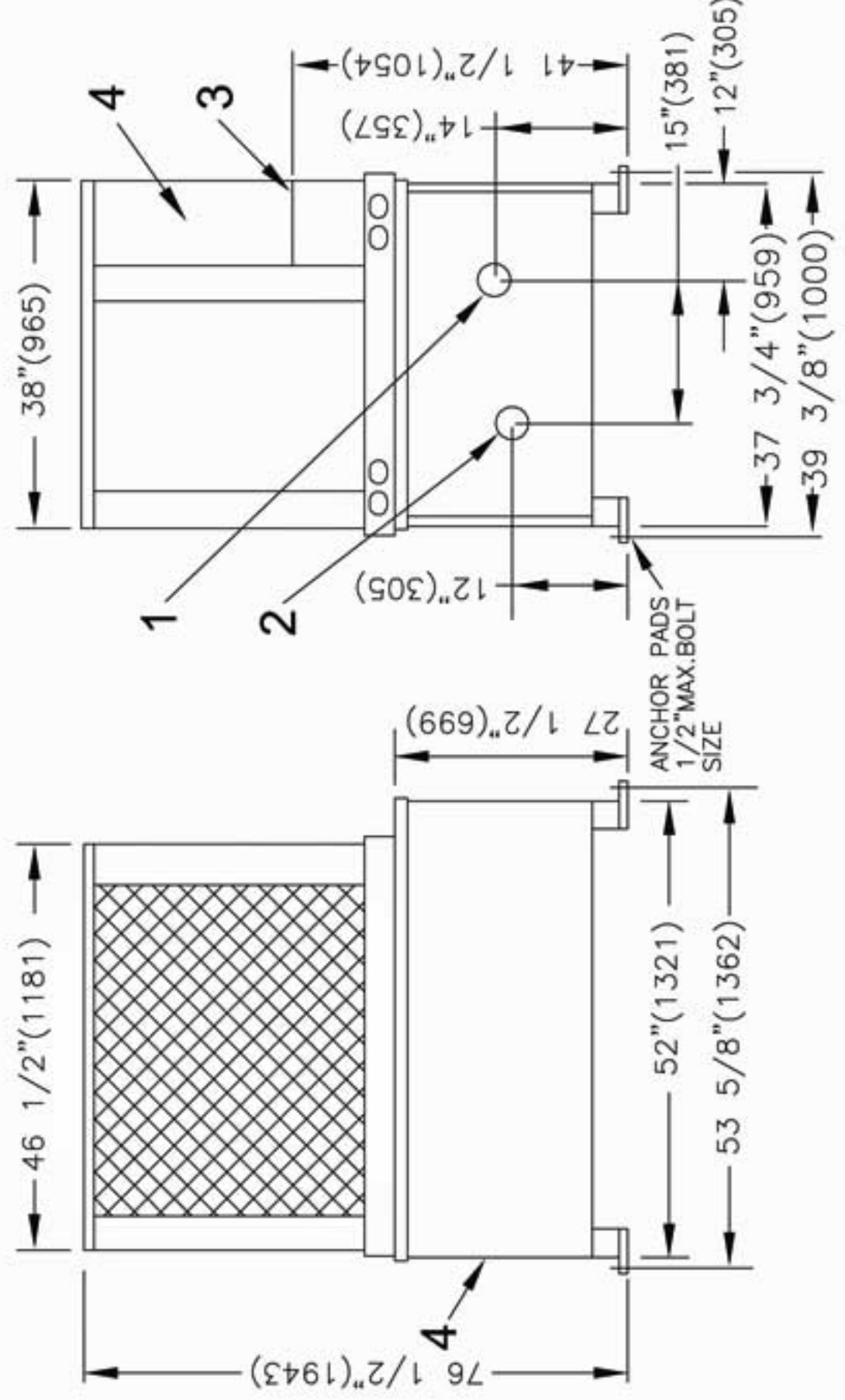
# Detail Line Drawing

(millimeters shown in parentheses)

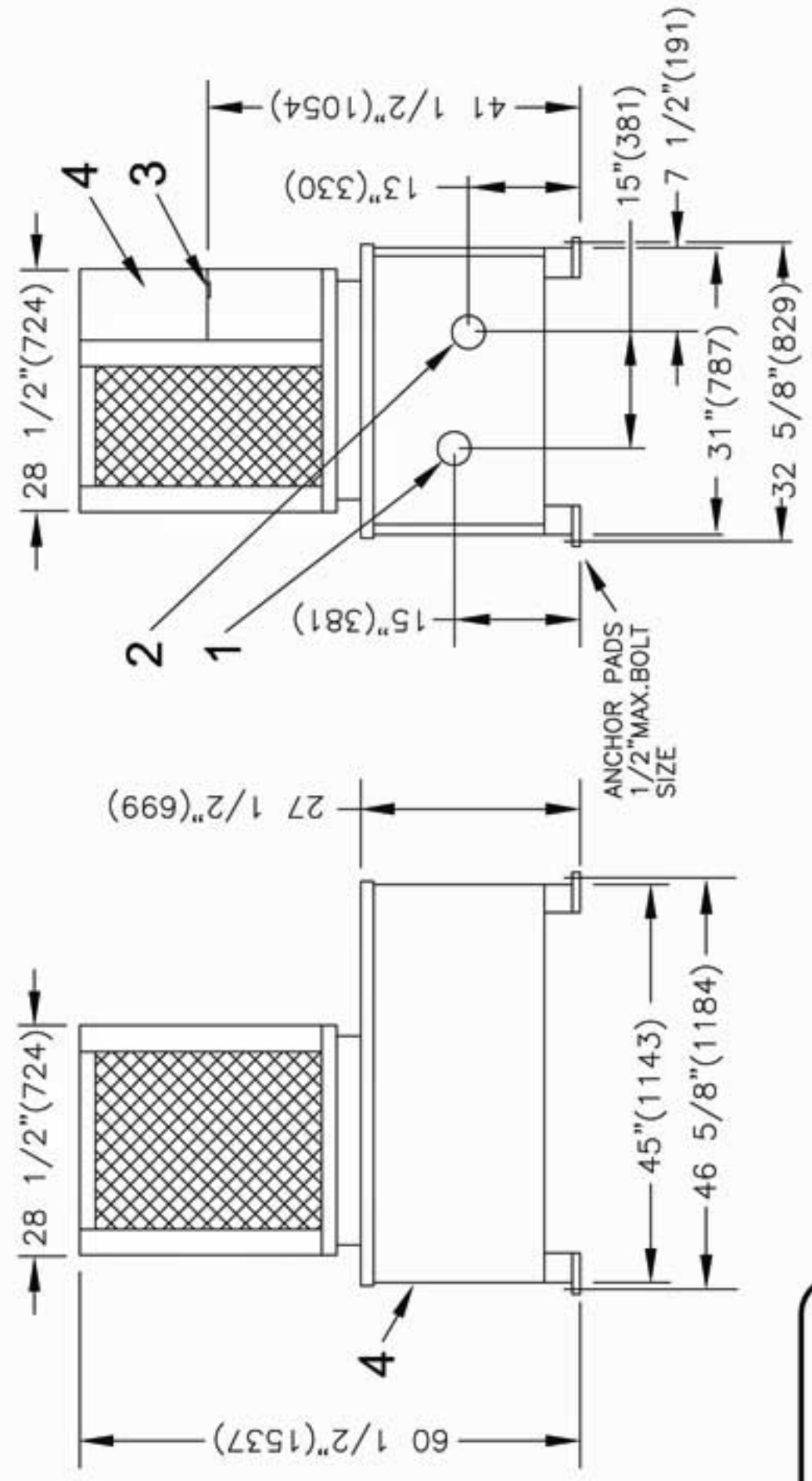
10CSB



75CSB



5CSB



# Forenta water chillers are designed specifically for dry cleaning machines

- High and low refrigeration safeties
- Low ambient fan cycling control
- Coaxial evaporator coil with a convoluted copper inner tube
  - R410A Refrigerant
  - Now with Lennox Condensers
- Freeze protection thermostat
- ETL Approved
- Flow control switch



**Forenta Chillers  
Made in the USA**